

"MORE HOLES PER DOLLAR"
WITH



CLEVELAND STANDARD STOCK AND SPECIAL DIE SPECIFICATION CHART

Dies listed below identified with an asterisk (*) are made to order. All others are in stock available for immediate delivery.

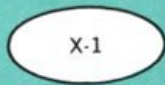
We can make any size die required

SEE CROSS REFERENCE CHART PAGES 4 THROUGH 12 FOR FIG. NO. USED ON YOUR IRONWORKER

Cleveland Standard Dies shown are high quality tools and are guaranteed to fit the bore of your die sockets.

If the dies you require are not shown on these charts, please furnish us O.D., Height and shape of hole required.

All dies in this catalog can be made in any shape. Illustrated below are some of the more commonly used shapes of dies.



Elliptical Oval



Rectangle



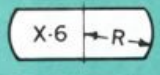
Square



Round



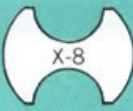
Oblong End Radius



Oblong Center Radius



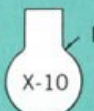
Hexagon



Lattice Bar



Single "D"



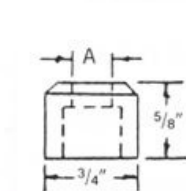
Keyhole



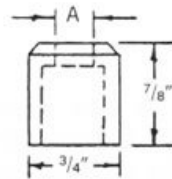
Keyhole with End Radius

Dies are available in shapes as shown above. Please advise clearance required or furnish us with thickness of material to be punched and we will provide exact clearance required.

Proper clearance will give increased punch and die life.



*Fig. No. 122
"A" to 3/8"



*Fig. No. 123
"A" to 3/8"

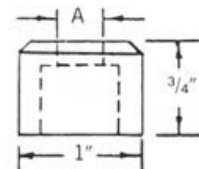


Fig. No. 41
"A" 5/32" to 3/4"

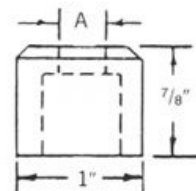
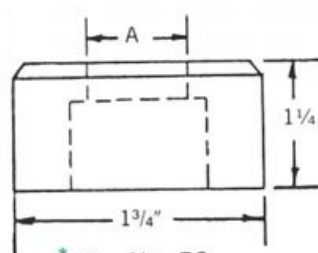


Fig. No. 42
"A" 5/32" to 25/32"



*Fig. No. 52
"A" to 1/4"

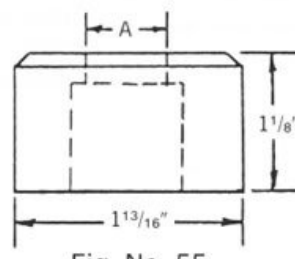


Fig. No. 55
"A" 5/32" to 13/8"

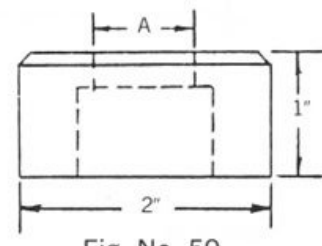
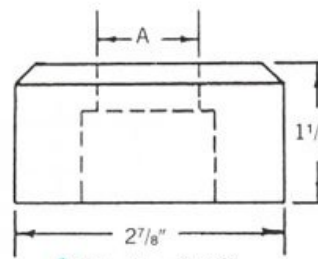
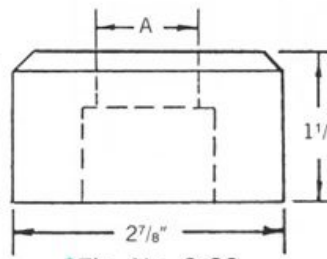


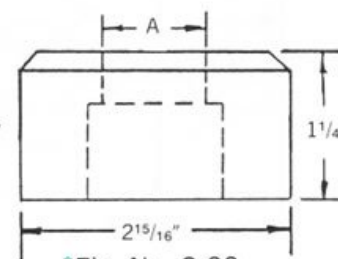
Fig. No. 59
"A" 5/32" to 17/16"



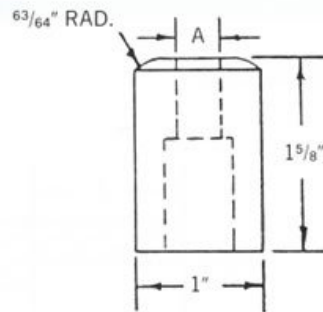
*Fig. No. C-88
"A" to 23/8"



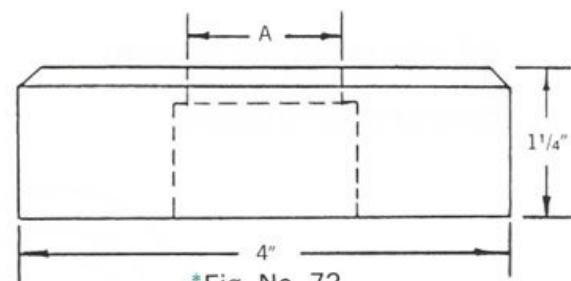
*Fig. No. C-89
"A" to 23/8"



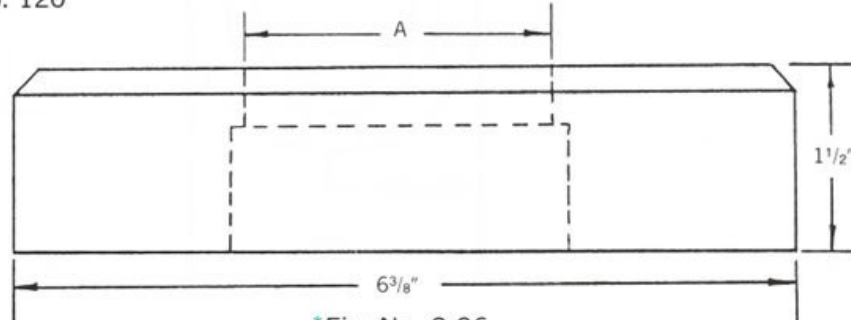
*Fig. No. C-90
"A" to 23/16"



CULVERT DIE
*Fig. No. 120



*Fig. No. 72
"A" to 37/16"



*Fig. No. C-96
"A" to 53/8"